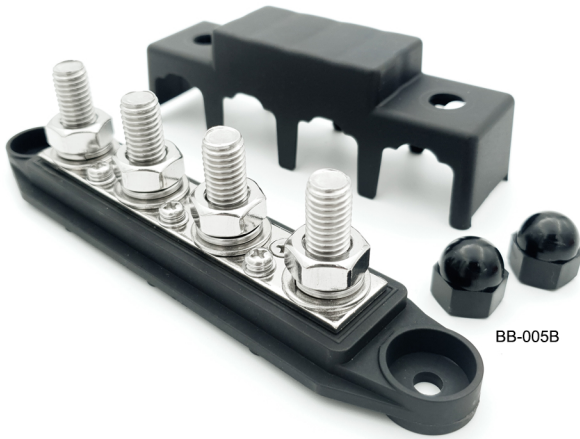


# Power Distribution

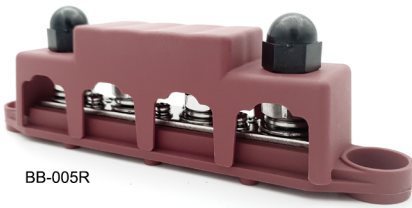
Bus Bars



BB-005B

- Heavy Duty
- Stainless Steel
- 1 Year Warranty

- Stainless Steel Studs.
- Nickel-plated brass contact plates.
- Protective Covers.
- Flame retardant bases.
- Installation hardware included.



BB-005R



Part Number	Voltage	Amperage	Color	Bolt Size	Bolt Qty	Screw Size	Bolt Qty	Dimensions
BB-005R	12-48V	250A Continuous	Red (Positive)	M10	4	M4	4	33.5mm (W)
BB-005B	-	-	Black (Negative)	-	-	-	-	168mm (L)
BB-005BR	-	-	Red/Black	-	-	-	-	53mm (H)



BB-001B



BB-001R

Part Number	Voltage	Amperage	Color	Bolt Size	Bolt Qty	Screw Size	Bolt Qty	Dimensions
BB-001R	12-48V	150A Continuous	Red (Positive)	M8	4	M4	6	28mm (W)
BB-001B	-	-	Black (Negative)	-	-	-	-	150mm (L)
BB-001BR	-	-	Red/Black	-	-	-	-	35mm (H)



TB-001

TB-002



TB-001R

Part Number	Voltage	Amperage	Color	Bolt Size	Bolt Qty	Dimensions
TB-001R	12-48V	150A Continuous	Red (Positive)	M10	1	47mm (L) 43mm (W) 32mm (H)
TB-001B	-	-	Black (Negative)	-	-	
TB-001BR	-	-	Red/Black (Pair)	-	-	



TB-002B

Part Number	Voltage	Amperage	Color	Bolt Size	Bolt Qty	Dimensions
TB-002R	12-48V	80A Continuous	Red (Positive)	M8	2	45mm (L) 43mm (W) 32mm (H)
TB-002B	-	-	Black (Negative)	-	-	
TB-002BR	-	-	Red/Black (Pair)	-	-	